

High-Flow Infusion Mesh

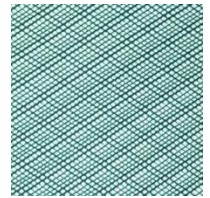
Flow Media

Product Numbers

PV-53

Description

An extruded PE grid mesh that is compatible with standard epoxy, polyester, and vinyl ester resin systems. It is recommended for flat panels and single curvature molds due to the stiffness of the material. PRO-VAC High-Flow Infusion Mesh offers an open mesh that creates a faster flow front for resin systems, when compared to standard knitted types. It can be used in composite processing with temperatures up to 248° F (120° C).



Pre-production trials are recommended to confirm suitability of PRO-VAC Vacuum Consumables with your unique laminate schedules and processes.

Technical Data

Part Number	Material	Thickness		Mesh Size		Temp Resistance		Color
PV-53	230 g/m ² ±5%	0.75~0.82 mm	0.028~0.032"	1.9 x 1.9 mm	0.075" x 0.075"	120°C	248°F	Green

Packaging and Storage

Plastic mesh inside 50 m/roll. Store this product in a cool, dry environment. The mesh should remain in its original packaging until just prior to use.

